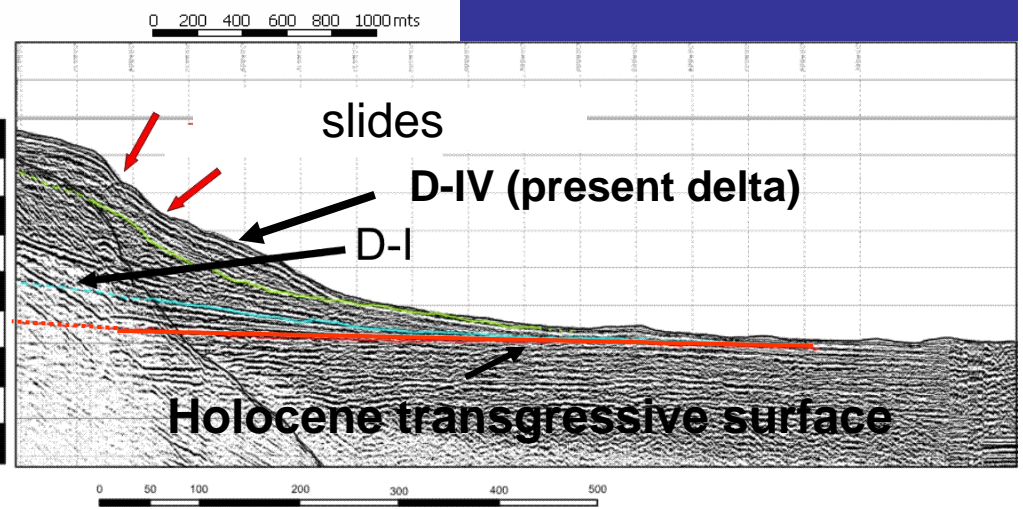
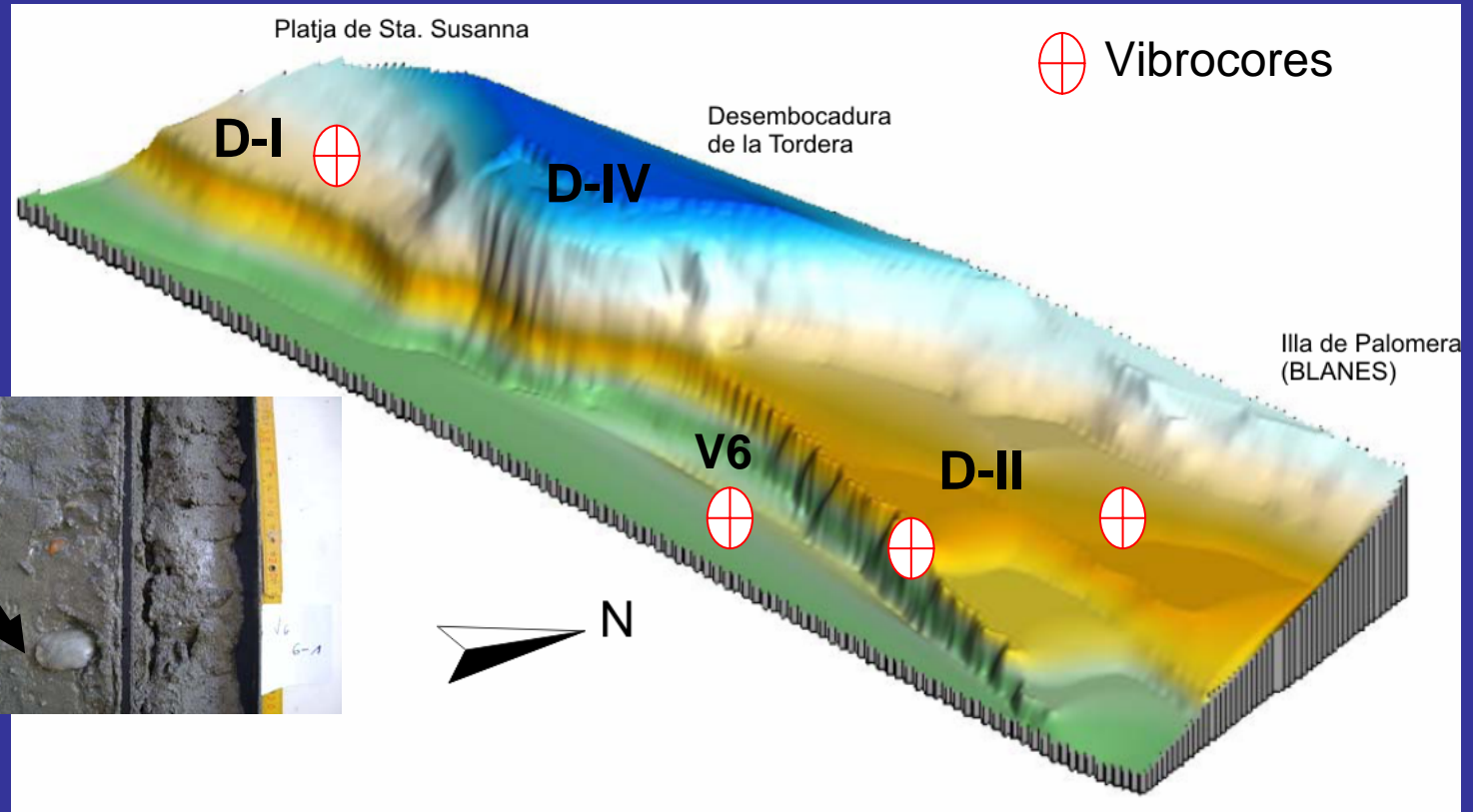


Profile 3

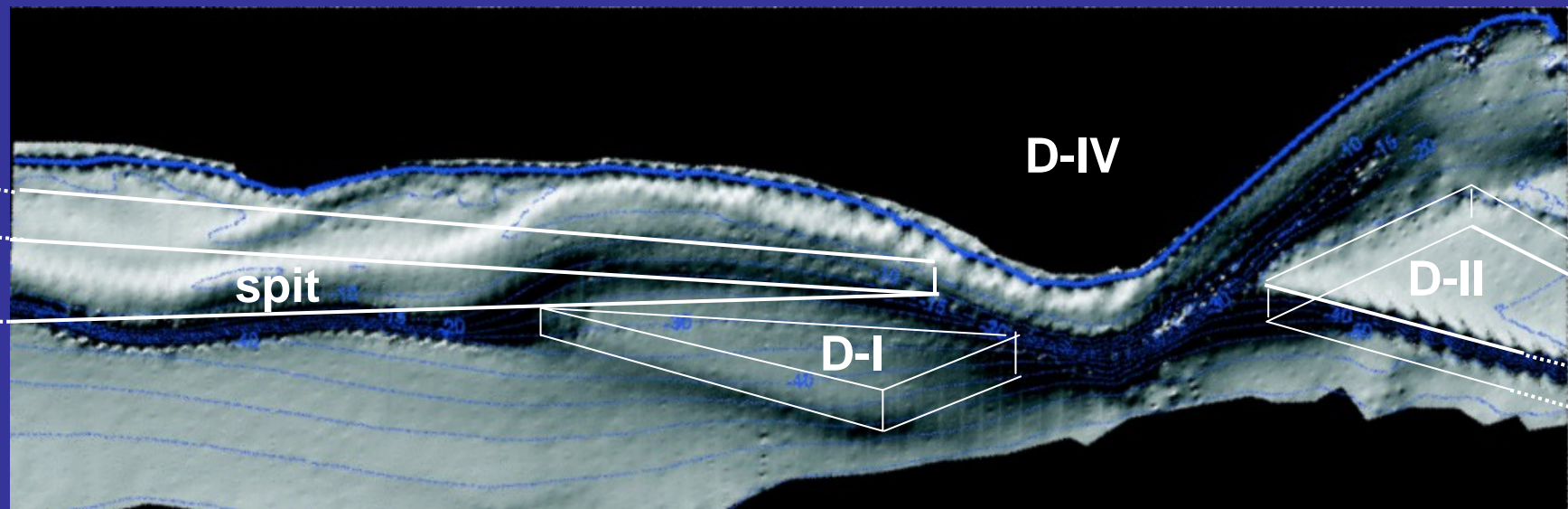
Tordera Prodelta structure from Boomer profile





Vibrocore from Tordera prodelta zone (V6 - Holocene transgressive surface)

The study and age of successive steps of delta buildup and eustatic curve are in course by selected dating -C14-



Present sedimentary cell balance is clearly negative.

Needs of sand for beach nourishment works give an important strategical value to the local stocked sand on those relict formations.

Tordera relict deltas and present submerged spit have at least a volume of 38 milion cubic meters of sand.